



Opening Doors at the Transformed Library

Opportunities to Honour Someone
Who Shaped Your World

BURMAN UNIVERSITY STEPS INTO THE FUTURE.

Shaping the World
Lives of Service Begin Here



Who Helped Shape Your Life?

Think back... Who gave you the skills you needed for career success? Who nourished your soul and opened the gates of creativity? Who encouraged you to serve?

- The musician who enriched your life by teaching you how to sing—or maybe play percussion?
- Your grandmother who modeled service and love as she organized the local food bank, baked pies for the school fundraiser, and laughed with you and your friends over great plates of spaghetti?
- Your father who worked at a job he loved, grew the juiciest raspberries in town, and listened as you practiced—and repeatedly practiced—your speech about recycling?
- The hockey coach who taught you how to pass, how to stretch before practice, and how to keep your temper during tense games?
- The family who invited you over for supper every Tuesday, opening their home and their hearts?
- The person who encouraged you when you doubted your talents and who counselled and prayed with you when you questioned your relationship with God?
- Your professor who wrote recommendations for professional school, and then wrote and visited as you completed an internship and a residency?

People are honoured not for what they received, but for what they gave. Who has given to you? Whom would you like to honour?

As the library transformation begins at Burman University, we invite you to make a gift that celebrates a person who helped shape you... and shape the world.

You may give to general transformation and construction, or you may wish to consider a special gift to name a key area of the library, such as a classroom or group study area. In either way, donors' names can be included on the donor wall. Please consider your participation thoughtfully and prayerfully.



A vibrant library is a key gathering and learning space. It's an intellectual centre: a place where learning, scholarship, and technology meet—a place where students learn to find, evaluate, and use real world information. In short, it's the heart of the campus.

*We plan not to remodel the library, but rather to **transform** it!*

Artist's rendering of transformed library



Looking into the Heart of the Library

Learning, Connecting, and Belonging

A library is much more than a collection of books. It serves as the cornerstone of a community—a place where people can learn, connect, and belong.

LEARNING involves discovering, evaluating, and using resources. Students will, of course, have access to books and a multitude of popular articles that are readily available, but learning opportunities don't stop there. The majority of Burman's acquisition budget is earmarked for *specialized* digital resources. In addition, augmented and virtual learning tools will expand learning opportunities. The Burman library will foster exploration and nurture research.

CONNECTING. Scholarly activities, scientific discovery, and responsible research are enhanced by a network of educational opportunities and support. Besides collaborating for research, students will be able to create multi-media projects from resources shared by several departments. A "makerspace," located in the library, will serve students from all disciplines as they creatively apply their knowledge.

BELONGING. Group study rooms and the Commons, including the fireplace hearth area, will accommodate students who favour different styles of learning and social interaction. The spaces will also provide meeting places for clubs and committees, perhaps even for lectures.

The transformed library will be a place where people can learn what is important, discover how they connect and interact with others, and determine their role in the community and the world. **LEARNING, CONNECTING, and BELONGING**—they're all at the heart of the Burman University Library.



Makerspace provides technology and fosters a collaborative learning environment.



Librarians teach information literacy. The result? Students find that knowledge is at their fingertips whether they are searching the stacks, receiving inter-library loans, or discovering electronic resources.



Group study rooms encourage active discussion and learning

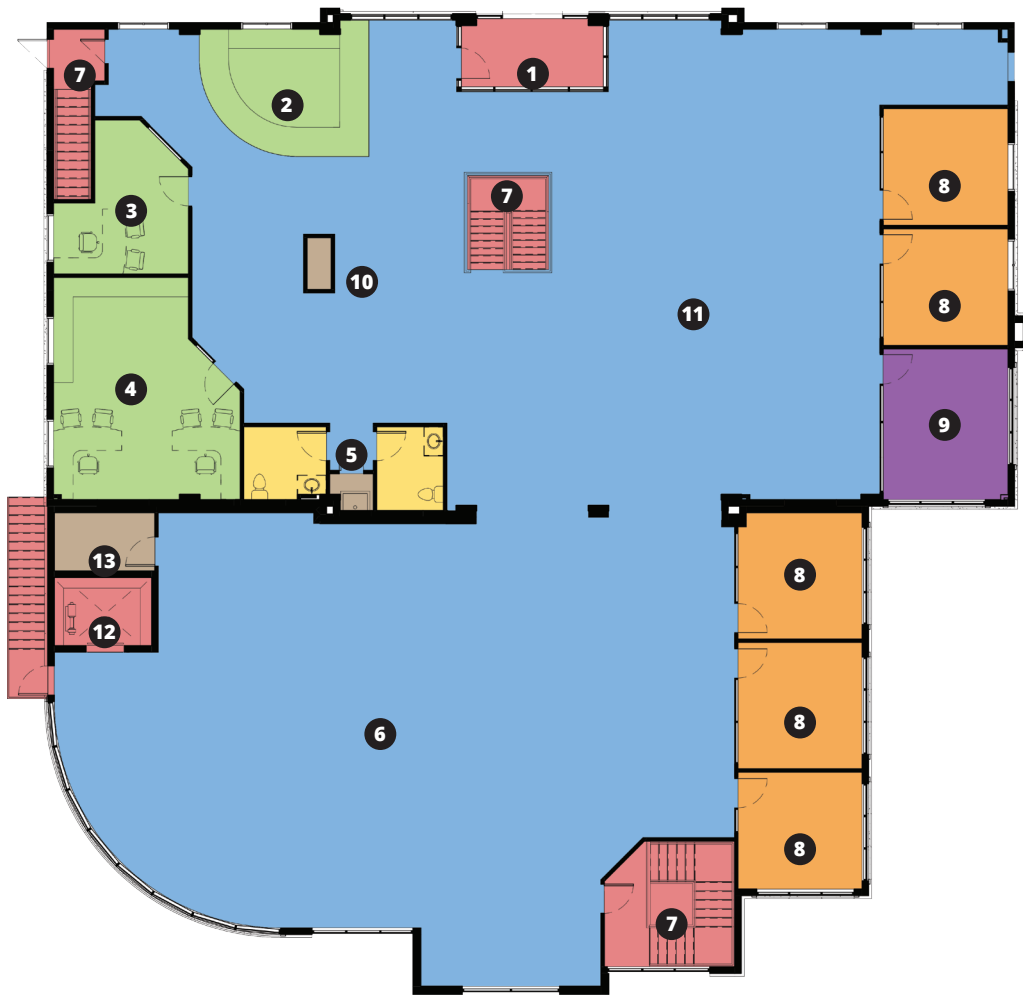
Peeking Through the Doors

Comparing the Current Library and Plans for the Transformed Library*

	Current Library	Transformed Library
Total Area	10,112	17,395
Commons	2,106	4,482 Lower Level (individual study): 1,600 Upper Level: 2,800 Fireplace Hearth: 82
Classroom/Makerspace	-nil-	945
Group Study Rooms	121	770 5 rooms at 154 each
Computer Services Room	-nil-	440
Virtual Reality/Audio Visual Room	-nil-	165
Reception/Circulation Desk	315	215
Writing Centre	65	130
Special Collections Room	160	170
Stacks for Print Materials	2,640 Regular stacks	5,700 Half stacks: 2,000 Compact shelving: 3,700
Librarians' Offices	268	380 Reference: 245; Assistant: 135
Technical Services Office	820	500

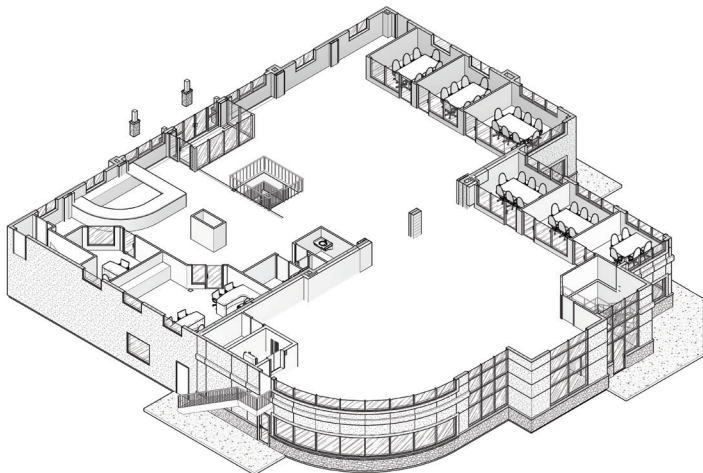
* Based on preliminary drawings. In square feet.

Upper Level Preliminary Concepts



Space Designation Key

1. Main Entrance
2. Reception/Circulation Desk
3. Librarian's/Reference Office
4. Computer Services Room
5. Washrooms
6. Commons
7. Stairs to Lower Level
8. Group Study Rooms
9. Virtual Reality/Audio Visual Room
10. Fireplace Hearth Study Area
11. Half Stacks
12. Elevator
13. Machine Room



Upper Level 3D view



Augmented and virtual reality (VR) offer educators and students ways to expand the walls of their classrooms.

Supporting Students and Honouring Someone Who Shaped Your Life

Naming Opportunities

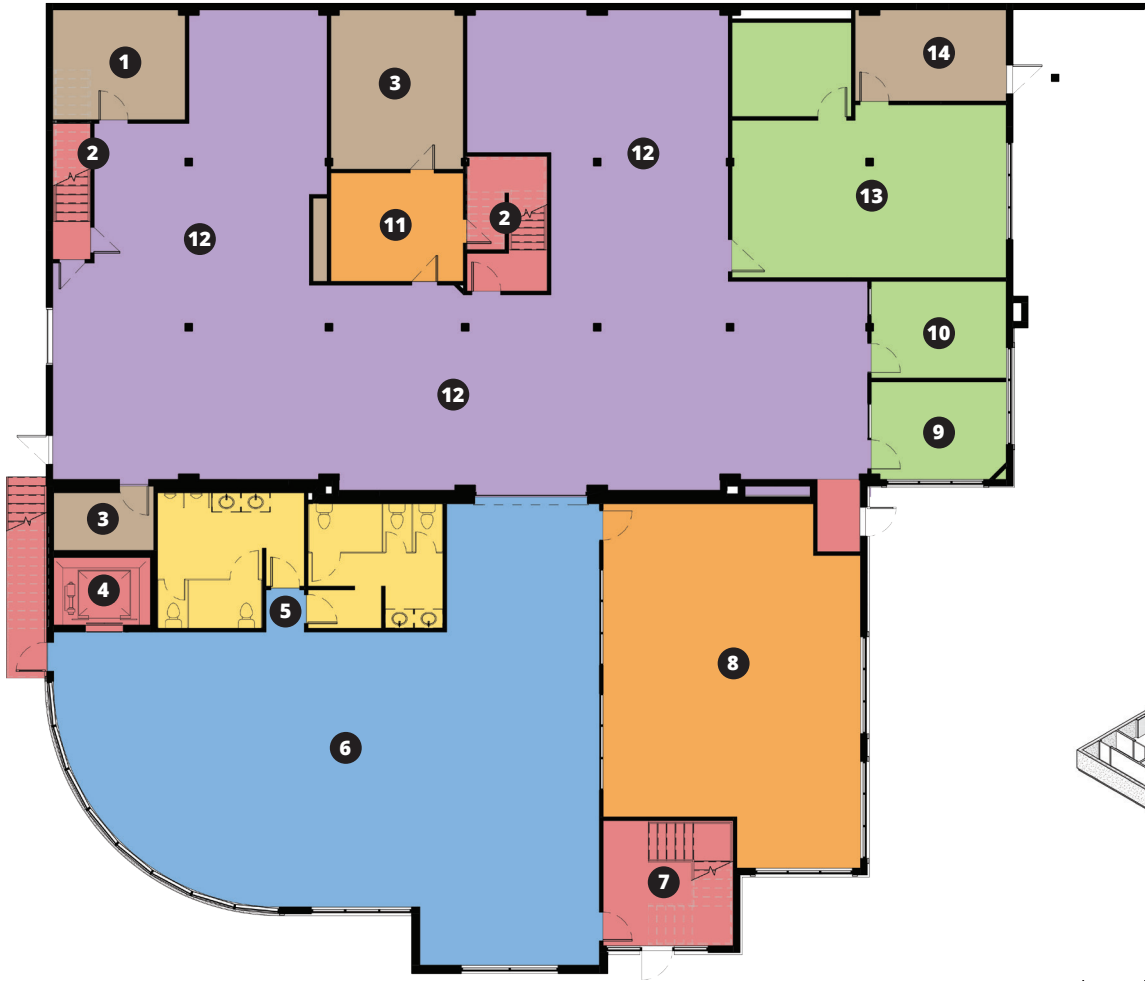
On the upper level, students can...

- | | |
|--------------------------------------|--|
| 2. Reception/Circulation Desk | • Start connecting by checking out books and equipment, asking directions, and getting technology help. |
| 3. Librarian's/Reference Office | • Learn to access and evaluate information, find resources, and learn skills to gain a competitive advantage in graduate school and the job market. Expert help is available here. |
| 4. Computer Services Room | • Find assistance with technology questions, thanks to a branch of the Computer Services Department. |
| 6. Commons | • Study with classmates or alone. Read. Research. Discover. Contemplate. There is space for all these activities in the Commons. |
| 8. Group Study Rooms | • Use great technology for collaboration: project screens from multiple personal devices onto a large screen, create presentations, and practice them to perfection. |
| 9. Virtual Reality/Audio Visual Room | • Experiment with virtual reality and create multimedia presentations. Need a group study space? This room will do double duty for that too! |
| 10. Fireplace Hearth Study Area | • Converse by the fire. Read. Relax. Belong. |
| 11. Half Stacks | • Use a selection of books located close to the group study rooms. |

Artist's rendering of north elevation.

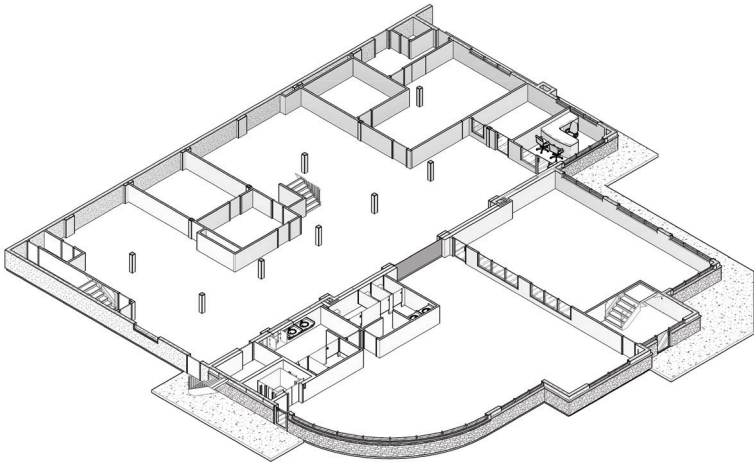


Lower Level Preliminary Concepts



Space Designation Key

- 1. Utility Room
- 2. Stairs to Upper Level
- 3. Machine Room
- 4. Elevator
- 5. Washrooms
- 6. Commons
- 7. Exterior Entrance and Stairs to Upper Level
- 8. Classroom/Makerspace
- 9. Assistant Librarian's Office
- 10. Writing Centre
- 11. Special Collections
- 12. Library Stacks
- 13. Technical Services Office
- 14. Delivery Entrance



Lower Level 3D view

Supporting Students and Honouring Someone Who Shaped Your Life

Naming Opportunities	On the lower level, students can...
6. Commons	<ul style="list-style-type: none">Study quietly—together or alone. Read. Research. Discover. Contemplate.
8. Classroom/Makerspace	<ul style="list-style-type: none">Get to know the information during class, and then apply new skills to discover, evaluate, and use excellent resources for assignments. In addition, the makerspace and its equipment help transform ideas into reality.
9. Assistant Librarian's Office	<ul style="list-style-type: none">Get help with website design, database, and system maintenance.
10. Writing Centre	<ul style="list-style-type: none">Benefit from one-on-one tutoring. Ace that paper while becoming a confident, self-directed, and informed writer.
11. Special Collections	<ul style="list-style-type: none">Hold heritage in their hands. This space contains rare books including Adventist publications printed on the Battle Creek steam press.



Students will find that the Commons, with its multi-purpose space, encourages individual study, group study, and social interaction.



Artist's rendering of south elevation.

Opening Heart and Hands

Making a Gift to Honour Someone Who Shaped Your World

We invite you to donate to the library transformation and honour a family member, a member of the Burman community, or someone else who shaped your world.

A central area of the library will display photos and life sketches of honourees, along with the names of contributors. There are also many opportunities to name specific areas of the library—for example, group study rooms, the Commons, and offices.

To learn about naming opportunities, you are invited to speak to Loren Agrey, president of the university.

Ways to Donate

Gifts of Cash

You can make a one-time gift; an annual, multi-year pledge; or a monthly contribution.

Gifts of Stocks and Securities

Donating publicly traded securities is an easy and effective way to support Burman. You may donate stocks, bonds, futures, options, and shares in mutual funds without paying tax on the capital gain.

Gifts-in-Kind

You may wish to give a gift-in-kind, for example building materials or saleable assets such as property. Every item will be reviewed individually.

To discuss how you can support the library transformation or any part of the SHAPING THE WORLD campaign, please contact

Loren Agrey
President
president@burmanu.ca
(403) 782-3381, ext. 4147

Eric Rajah
Chair, Advancement and Donor Relations
ericrajah@burmanu.ca
(403) 782-4938



For more than a century, Burman University has thrived with the support of those who value a Christian education. Founders, parents, alumni, and friends have sacrificed to provide young men and women with an education that prepares them for a life of service and career excellence.

As knowledge expands, there is a responsibility for education to keep pace. That vital obligation underlines Burman's growth and development plans.

As Burman University steps into the future with this library transformation, please consider your role in shaping young lives.

Loren Agrey, PhD
President



J.D. Victor Fitch
President Emeritus,
Chair Campaign
Advisory Team



The Doors of Opportunity

A Note from Burman Presidents

Burman University is standing on the threshold of an exciting future. The door of opportunity stands open to provide students with the best learning environment possible. As they step into the future, their desire for competence, care, and compassion will be developed by teachers, mentors, deans, librarians, coaches, and staff members. Lives of excellence and service are nurtured at Burman.

The door of opportunity also stands open for you to remember mentors, family members, and friends—people who serve as your role models. They helped to shape you into the person you are today. There is, perhaps, no finer way to honour their legacy than to significantly connect their names to the transformed library—the building that will soon become the heart of the Burman campus.

You are invited to honour them as we create a transformative new addition to our campus.

Loren Agrey

J.D. Victor Fitch

“Be an opener of doors.”

Ralph Waldo Emerson

“I’ve learned that you shouldn’t go through life with a catcher’s mitt on both hands; you need to be able to throw something back.”

Maya Angelou



6730 University Drive
Lacombe, AB T4L 2E5

www.burmanu.ca