

# CAMPUS CONNECTIONS

A Newsletter for Burman University

Thursday, 10 April 2025



Join us for a  
**FREE  
FITNESS  
VIDEO SHOOT**  
with **Coach JB Mangena**

Join Coach JB Mangena for an energizing, free video shoot that will get you moving, motivated, and feeling your best- physically and spiritually. Be part of this exciting fitness experience- come ready to move, have fun and be inspired!

**REGISTER HERE**

**Venue:** Burman PE Center  
**Date:** Thursday, April 10  
**Time:** 6:00 - 8:00pm

Alberta Government ACTS

## Hey Burman Family!

Get ready to move, sweat, and shine on camera! We're inviting YOU to be part of an exciting FREE Fitness Video Shoot with Coach JB Mangena on April 10, 2025, from 6:00 - 8:00 PM at the Burman Gym.

This isn't just a workout—it's your chance to be featured in a promotional video for an upcoming 5-week Bootcamp designed to help our youth and young adults Get Active!

The Bootcamp, launching later this year, will include:

- ⇒ 1 hour of Weight Loss Training
- ⇒ 1 hour of Muscle Building
- ⇒ ...all led by Coach JB at Burman Gym!

By joining this video shoot, you'll experience the energy firsthand, have fun, and help inspire others to get active.

Come ready to move, bring your friends, and let's make fitness exciting together!

**Register now! scan QR code**

Let's show up, show out, and make this campaign a success!

#GetActive #BurmanBootcamp #FitnessForAll

## Week at a Glance

Sunset: 8:27 pm

Friday, April 11 @ 7:30 PM  
**CAYA @ The Hideout**

## SABBATH

### ADULT SABBATH SCHOOL

#### 9:15 AM SINGSPIRATION

Xyrish Rondael and Friends  
Pianist: Nicole Bartolay

#### SUPERINTENDENT:

Jonathan Campbell

**ADULT SABBATH SCHOOL SANCTUARY TEACHERS**  
(All classes in sanctuary are combined today)  
Adam Kis

### UNIVERSITY SABBATH SCHOOL

9:45 AM

**Social Eyez**

CHURCH SERVICE 11:00 AM

**Speaker: Pastor Carl Cunningham**

## Coming up....

April 14 - 17, 22 - 23

**Winter term final examinations**

**April 18 - 21**

Easter Break

**April 25 - 27**

Graduation Weekend

## IMPORTANT ACADEMIC DATES

April 10 Last Day of classes  
April 11 Reading Day (no classes)

See [Academic Dates](#) for further information.



# VOLUNTEERS NEEDED

For the Last Maskwacis Outreach of the School Year

When | Sabbath, April 12, 2025

Where | Maskwacis SDA Church

Why | Join the Maskwacis Outreach

441022 Range Rd 253, Ponoka, AB T4J  
1R2

Program to **connect** with

Pickup @ Lakeview Hall | 10:30 AM

**Indigenous children.**

Drop Off @ Lakeview Hall | 3:30 PM

Limited Spots Sign Up with the link in your Gmail!

# HOUR OF INSIGHT CAMP BIBLE STUDY

Snacks will be Provides



11.APR.2025 | 6PM

Casey's Cabin Burman University  
Range Rd 270A, Lacombe, AB T4L 2E5



STUDENT SERVICES



FRIDAY, APRIL 11 @ 7:30 PM  
HILLTOP HIDEOUT

Devotional & Praise   Hot Dogs   Bible Games

## Burman University Airport Shuttles

Burman University is offering shuttles to the airport for those leaving campus at the end of the semester. These dates are Apr.22, 23, and 27. For more information and to book your seat on a shuttle go to [www.burmanu.ca/transportation](http://www.burmanu.ca/transportation).



# SABBATH SCHOOL

STUDYING  
**MARK  
14**

@SOCIAL EYEZ

TIME | 9:45 AM - 10:45 AM

## 12.04.2025

COLLEGE HEIGHTS COMMUNITY WORSHIP  
EVERY TRIBE • EVERY TONGUE

## INTERNATIONAL *Sabbath*

**APRIL 12, 2025**

**SABBATH SCHOOL 9:15 - 10:30 AM**

**WORSHIP EXPERIENCE 11:00 AM - 12:30 PM**

*with Dr. Carl Cunningham*

**DELICIOUS INTERNATIONAL POTLUCK  
DINNER & CULTURAL EVENING PROGRAM**

**STARTING AT 6:00 PM @BURMAN**

**UNIVERSITY: PHYSICAL EDUCATION CENTRE**



# ALYSSA DE GIER

## Senior Viola Recital

### FEATURING WORKS BY:

- SITT
- BACH
- CLARKE
- STAMITZ

**NICOLE BARTOLAY**  
PIANIST

**APRIL 11, 2025**  
3PM | COLLEGE HEIGHTS  
SDA CHURCH







# *Piano Recital*

*Sandra  
Glover*

Featuring  
Works by

Haydn  
Schubert  
Gershwin  
Domine  
Bach

April 12 | 7:30 pm  
College Heights Church

A woman with a large tattoo on her left arm, wearing a red dress, stands behind a pair of red curtains. The background is dark, and the curtains are pulled back to reveal her. The overall theme is elegant and theatrical.

Yandira Alexandria Campos

SENIOR VOCAL  
RECITAL

*Timeless Melodies*

*Endless Stories*

April 13, 2025 | 7 PM |  
College Heights SDA Church

Accompanist: Olivia Daeun Kwak



Burman University



CAMPUS  
MINISTRIES



# Mabuhay: Live to Serve

## *Philippines 2025 Mission Trip*

HELP MAKE A DIFFERENCE BY SUPPORTING OUR  
INTERNATIONAL SERVICE TRIP TO THE PHILIPPINES!

### WAYS TO GIVE:

SCAN THE QR CODE TO GIVE ONLINE.

### ITEM DONATIONS WE ARE COLLECTING::

TOILETRIES TOOTHBRUSHES TOOTHPASTE, DEODORANT,  
BAR SOAP, ETC.

NEW OR LIGHTLY USED ELECTRONICS: TABLETS, LAPTOPS

### DROP-OFF LOCATION:

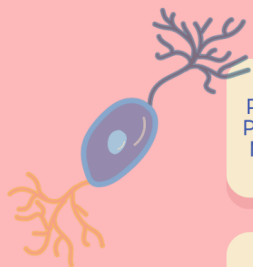
PLACE DONATIONS IN BARREL OUTSIDE STUDENT  
SERVICES OFFICE.

DONATE



# APPLY NOW

## PSYC & BHSC EXEC.



PREF. TO  
PSY/BHS  
MAJORS

### Executive VP

DESCRIPTION IN FORM

OPEN TO  
ALL  
MAJORS

### Financial VP

DESCRIPTION IN FORM

OPEN TO  
ALL  
MAJORS

### Communications

DESCRIPTION IN FORM



OPEN TO  
ALL  
MAJORS

### Spiritual VP

DESCRIPTION IN FORM



or email [paulina.sanchez@burmanu.ca](mailto:paulina.sanchez@burmanu.ca)





# *Get cleared. Get a cookie.*

Swing by **Student Finance Services**  
for your financial clearance!

9 AM – 4 PM

(Closed for lunch: 12 PM – 1 PM)

## **JOB OPPORTUNITY - WALKING DISTANCE FROM BURMAN CAMPUS**

Are you a compassionate and dedicated individual with empathy and patience that would be interested in providing care and assistance to a person with disabilities? This position offers an opportunity to make a positive impact in someone's life and to work in a flexible, comfortable home environment.

### **KEY RESPONSIBILITIES:**

- Provide assistance with daily activities such as personal care and household tasks.
- Support the individual with social and recreational activities to encourage participation and engagement.
- Administer medication.
- Ensure the person's safety and well-being at all times.
- Collaborate with family members.

For more information, please contact Ronda Ziakris at 403.350.7180 or email at [rziakris@gmail.com](mailto:rziakris@gmail.com)



# SAVE *the* DATE Sunday, June 8

Wolf Creek Golf Course, Ponoka

Register today!

\$160/player until May 1

\$210/player May 2-June 1



[www.burmanu.ca/golf](http://www.burmanu.ca/golf)







## The Facility Maintenance department is looking for full-time student workers for this summer

- Preference given to those that have a valid driver's license and meet the driving policy criteria.
- Students may qualify for up to \$1,000 Burman scholarship.
- If residing in Lakeview Hall, Maple Hall or Riverton, and working full-time on campus, students may be eligible for a summer rent rebate.



Inquire for details and apply at Facility Maintenance office  
Ext. # 4130 [facilitysec@burmanu.ca](mailto:facilitysec@burmanu.ca)

## Work on campus during the summer and you could save money!

The Burman University Summer Work Program gives new and returning students the opportunity to work on campus during the summer. This opportunity includes a **full rent rebate** (minimum 30 hours worked per week) as well as eligibility for the Summer Ministries Scholarship, a value of up to \$1000 per school year.

### How it works:

- If you work for 30 or more hours per week on campus during the summer, your rent from Riverton Hall will be rebated back onto your student account.
- A 30% matching scholarship up to a maximum of \$1000 is available on summer earnings that are applied to your Burman account during the summer months.

### ELIGIBILITY:

#### *New Students*

- Must be accepted into Burman University for the upcoming school term starting in September.
- Must have completed budgeting with the Student Financial Services Office for the upcoming school term starting September

#### *Continuing Students*

- Must have pre-registered for full time attendance in the upcoming school term starting in September.
- Must have completed financial budgeting for the upcoming school term starting in September.

#### *Graduating/Non-returning Students*

- Not Eligible

Please see Burman's [website](#) for the full list of criteria.