

CAMPUS CONNECTIONS

A Newsletter for Burman University

Thursday, 05 December 2024



IMPORTANT ACADEMIC DATES

December 13 - January 5
January 6

Christmas Break
First Day of Classes

See [Academic Dates](#) for further information.

Week at a Glance

Sunset: 4:21 pm

Friday, December 6 @ 6 PM

CAYA at the Hideout
with the Student Services Team

SABBATH

ADULT SABBATH SCHOOL

9:15 AM Singspiration

Elvira Gascoyne, Oksana Manilich

Superintendent:

Sheldon Bailey

Adult Sabbath School Sanctuary Teachers
Sheldon Bailey, Tennyson Samraj, Daniel Saugh

UNIVERSITY SABBATH SCHOOL

9:45 AM

Acts 27

Social Eyez

CHURCH SERVICE 11:00 AM

Speaker: Pastor Liz Pule

Kingdom Assignment

Coming up....

FINAL EXAMS

December 5 - 12

Saturday, December 7, 6 - 9 PM

Christmas Bash

Sakala Success Centre Team

Lakeview Hall

Christmas Break

December 13 - January 5

First Day of Classes

January 6



*Join the SSC and ROC for an evening
of fun, food, relaxation and laughter*

Christmas Bash

DECEMBER 7, 6PM - 9PM

LAKEVIEW LOBBY

**GET CREATIVE, SIGN UP
YOUR TEAM AND DECORATE
A GINGERBREAD HOUSE**



**Neck/Shoulder
Massages**

Laughter

Friends

*Merry
Christmas*


StepMania
**FOOD
Games**

Sign your gingerbread building
team up today: Scan or come to
the **Sakala Success Centre**





COLLEGE HEIGHTS
SEVENTH-DAY ADVENTIST CHURCH

KINGDOM

God's Design for Christian Community

DENNALIA



HONEY



MASSIEL



ORLANDO



CARL



NICOLE



LIZ



RYAN



November-December

SATURDAYS | 11:00 AM

Burman University Singers
CHRISTMAS ORNAMMENT
FUNDRAISER



TWO
STYLES
AVAILABLE

ONLY
\$10
EACH

ORDER NOW



<https://www.canadahelps.org/en/charities/burmanuniversity/events/choir-ornaments>

Special Pick-up and Delivery Available by Arrangement

Burman University
Singers

**SAVE YOUR
PLACE**

**2025
BLACK TIE
DINNER
& SILENT
AUCTION**

TICKETS

\$55

FEB 8

RESERVE YOUR SEAT BEFORE
DECEMBER 31 AND SAVE 15%



*Save
the date!*

Professional Development Seminar
Teacher Resiliency in Contemporary Classrooms

With special guest presenters from the Wolf Creek Public School Division:

Kevin Newman, Assistant Superintendent of Education Services

and

Irene Donaldson, Director of Education Services

Tuesday, December 10
6:00 - 7:30pm M-112



CENTRAL ALBERTA CHAMBER ORCHESTRA
presents

an evening of classical Christmas music,
traditional favourites and
music from our
TV classic favourite
'RUDOLPH
THE RED NOSED
REINDEER'!

**Holiday
Family
Fun!**

Celebrating the
60th anniversary
of this timeless
Holiday TV
classic!

Special
appearance
by the
Red Deer
Chamber
Singers!

Friday, December 13, 2024 - 7:00 pm
Lutheran Church of the Good Shepherd, RED DEER, AB

show added! Saturday, December 14, 2024 - 7:00 pm
Ponoka United Church, PONOKA AB



UNI IS ALREADY STRESSFUL ENOUGH

—DON'T LET MONEY
ADD TO IT!

SCAN ME!

Collegiate Advocates for Better Living
present...



"Made New"

CABL Health Weekend 2025

January 9-11, 2025

Featuring Dr. David
DeRose, author of *The
Methuselah Factor*

Save the date!

Dinner With a Doctor, CAYA, Sabbath
Services, and a Sabbath Seminar

More information coming soon!



@burmancablclub

Students from Alberta, Scholarships for you!

The **Dr. Gary McPherson Leadership Scholarship** recognizes students who have demonstrated outstanding leadership, especially in the area of disability.

Selection will be made on the basis of the role and contribution each student has made to the school as well as the documentation provided with the application.

- **VALUE:** \$2,000
- **Application Deadline:** January 15, 2025.

CRITERIA:

- A Canadian Citizen, Permanent Resident, or Protected Person
- An Alberta resident according to the criteria outlined on the application
- Must be in good academic standing.
- Must be a full-time student, enrolled in a minimum of 9 credits in the current semester.
- Must have shown outstanding leadership, especially in the area of disability, and/or initiative to improve the lives of other people while attending a publicly-funded post-secondary institution in Alberta.

HOW TO APPLY:

Fill out the **APPLICATION**, returning it to sfs@burmanu.ca with the following:

- a resumé highlighting your leadership involvement and extra-curricular activities related to improving the lives of other people, and
- an essay of up to a maximum of 1,000 words.

The **Laurence Decore Award** for Student Leadership recognizes post-secondary students who have demonstrated outstanding dedication and leadership to fellow students and to their community.

Selection will be made on the basis of involvement and accomplishments in student government or student societies, clubs or organizations, or student organizations at the provincial or national level, or in non-profit community organizations.

- Value: \$1,000
- Application Deadline: January 15, 2025.

CRITERIA:

- A Canadian Citizen, Permanent Resident, or Protected Person
- An Alberta resident according to the criteria outlined on the application
- Must be in good academic standing.
- Must be a full-time student, enrolled in a minimum of 9 credits in the current semester.
- be involved in either student government or student societies, clubs or organizations, or involved in student organizations at the provincial or national level or in non-profit community organizations.

HOW TO APPLY:

- Fill out the **APPLICATION**, returning it to sfs@burmanu.ca with the following:
- A detailed description of your involvement and accomplishments in student government or student societies, clubs or organizations, or student organizations at the provincial or national level or in non-profit community organizations.

SEW INN

ALL PROFESSIONAL SEWING SERVICES



We want to look our best everyday, and that almost always involves having clothes conform to our shape. Ready to wear clothes are designed for a balanced figure. Sew Inn provides alterations and customization of outfits to suit your body to perfection. A custom dress is unique because it is made specifically for you, based on your measurements and design choices. This ensures a perfect fit and allows you to express your personal style. From the fabric and color to the neckline and hemline, every detail is specific.



We are committed to helping you craft and recreate the perfect form fitting flattering outfits every time whatever the occasion.



**HOME OF EXTENSION &
BRAIDING EXPERTS
4716 49B AVE, UNIT 2,
LACOMBE
MERCHANTILE BUILDING
LACOMBE**

**Phone: (403) 913 4730
(587) 438 0997**

**Facebook: Sew Inn Expert
Instagram: sewinnexpert
TikTok: sewinnexpert**



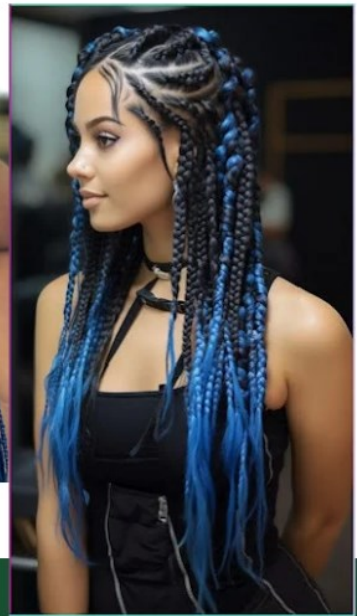
HOME OF EXTENSIONS AND BRAIDING EXPERTS



As dedicated partners in the beauty industry, we offer high-quality Remi human hair extensions, hairpieces, and accessories. We believe in the healing power of hair, the beauty of transformation. Do you have short hair, alopecia or are you experiencing hair loss due to chemotherapy, and you want a fuller crown, come to us and we will make you feel like a whole new woman, flawless.



Cornrows and Dreadlocks are chic ways to both protect and style your natural hair while Box braids, Twisted braids or Crochet braids are the ultimate get-up-and-go hairstyle. Whatever your preference, we can help you achieve your dream look with specialized techniques.



4716 49b Ave Lacombe, Mercantile Building Lacombe

Phone: (403) 8484392 (587) 438 0997

Facebook: Lacombe Home of Hair Extensions

Instagram: lacombehomeofextensions

Website: www.kepsbeautysupply

Email: extensionbraiding@gmail.com