

CAMPUS CONNECTIONS

A Newsletter for Burman University

Thursday, 28 November 2024

PRAYER MEETING in the Library Prayer Room this evening from 7:30 - 8 pm. Come and bring what is on your heart so we can pray together.

Happy American
**THANKS
GIVING**



FREE PIE
THURSDAY, NOVEMBER 28
12 - 1 pm

CAFETERIA LOBBY
for Burman students, staff and faculty

PUMPKIN OR APPLE

Please Note: 1 piece per person

IMPORTANT ACADEMIC DATES

- November 25** Last day to withdraw from any second 1/2 term course without incurring an F grade
- December 3** Last day of classes!!

See [Academic Dates](#) for further information.

Week at a Glance

Sunset: 4:26 pm

Friday, November 29 @ 7:30 PM

The Voices of Christmas

Burman University Choral Union
College Church

SABBATH

ADULT SABBATH SCHOOL

9:15 AM Singspiration

Deicy Alcudia, Darry Davis

Superintendent:

Jonathan Campbell

Adult Sabbath School Sanctuary Teachers

JW Bruins, Maranatha Odong, Eric Ollila

UNIVERSITY SABBATH SCHOOL

9:45 AM

Acts 27

Social Eyez

CHURCH SERVICE 11:00 AM

Speaker: Pastor Carl Cunningham

Kingdom Brokenness (House of Prayer)

Coming up....

Tuesday, December 3

@ 11:00 AM

PowerUp

Admin Chapel

Last Day of Classes

December 4

Reading Day

December 5 - 12

Final Exams



BURMAN UNIVERSITY CHORAL UNION

THE VOICES OF *Christmas*

Experience the narratives of Mary, Joseph, the shepherds, the wisemen, the drummer boy, the angels and many more as their stories are told through powerful and moving music.

NOVEMBER 29 | FRIDAY AT 7:30 PM

NOVEMBER 30 | SATURDAY AT 4:00 PM

DR. WENDOLIN PAZITKA MUNROE, DIRECTOR
OLIVIA KWAK, PIANIST

A FREEWILL OFFERING WILL BE COLLECTED

College Heights SDA Church Lacombe, AB



BURMAN
UNIVERSITY

Burman University Singers

CHRISTMAS FUNDRAISER

ALL ORNAMENTS
**ONLY \$10
EACH**



ORDER NOW



<https://www.canadahelps.org/en/charities/burmanuniversity/events/choir-ornaments/>
Special Pick-up and Delivery Available by Arrangement



*Join the SSC and ROC for an evening
of fun, food, relaxation and laughter*

Christmas Bash

DECEMBER 7, 6PM - 9PM

LAKEVIEW LOBBY

**GET CREATIVE, SIGN UP
YOUR TEAM AND DECORATE
A GINGERBREAD HOUSE**



**Neck/Shoulder
Massages**

Laughter

Friends

*Merry
Christmas*


StepMania
**FOOD
Games**

Sign your gingerbread building
team up today: Scan or come to
the **Sakala Success Centre**





Burman University Singers

SAVE THE DATE

BLACK TIE DINNER 2025 & SILENT AUCTION

Early Bird Discount

FEB 8

FOR MORE INFORMATION CONTACT TRINA HOSKINS AT
(403) 783-3391 X 4089 OR TRINAHOSKING@BUMANU.CA

FINAL EXAM SCHEDULE FALL 2024

IF YOU HAVE CLASS AT THIS TIME:

Monday, Wednesday at 8:00 a.m.
Monday, Wednesday at 9:30 a.m.
Monday, Wednesday, Friday at 11:00 a.m.
Wednesday at 11:00 a.m.
Monday, Wednesday at 1:15 p.m.
Monday, Wednesday at 2:45 p.m.
Monday, Wednesday at 4:15 p.m.
Tuesday, Thursday at 8:00 a.m.
Tuesday, Thursday at 9:30 a.m.
Tuesday, Thursday at 1:15 p.m. (ENGL 201 see #3)
Tuesday, Thursday at 2:45 p.m. (ENGL 201 see #3)
Tuesday, Thursday at 4:15 p.m.
Friday at 8:00 a.m.
Friday at 1:15 p.m.

YOUR FINAL EXAM TIME IS:

Thursday, December 5, 1:30 p.m. - 4:30 p.m.
Monday, December 9, 9:00 a.m. - 12:00 p.m.
Thursday, December 12, 9:00 a.m. - 12:00 p.m.
Thursday, December 12, 9:00 a.m. - 12:00 p.m.
Monday, December 9, 1:30 p.m. - 4:30 p.m.
Thursday, December 14, 9:00 a.m. - 12:00 p.m.
Wednesday, December 11, 1:30 p.m. - 4:30 p.m.
Friday, December 6, 8:00 a.m. - 11:00 a.m.
Wednesday, December 11, 9:00 a.m. - 12:00 p.m.
Tuesday, December 10, 9:00 a.m. - 12:00 p.m.
Tuesday, December 10, 1:30 p.m. - 4:30 p.m.
Thursday, December 5, 9:00 a.m. - 12:00 p.m.
Monday, December 9, 9:00 a.m. - 12:00 p.m.
Monday, December 9, 1:30 p.m. - 4:30 p.m.

EXCEPTIONS:

1. Evening classes, your exam will be on the first evening your class meets, from 6-9 p.m.
2. Directed studies, please consult with your instructor.
3. ENGL 201 A and B, your exam will be Friday, December 6, 12:30 - 3:30 p.m.
4. RELB 201/202, your exam will be Monday, December 9, 9:00 a.m. - 12:00 p.m.

UNI IS ALREADY STRESSFUL ENOUGH

—DON'T LET MONEY
ADD TO IT!



The background of the poster is a photograph of a city street, likely New York City, featuring a traffic light, a 'PRINCE ST' street sign, a 'ONE WAY' sign, and a 'LEFT LINE MUST TURN LEFT' sign. A red and white train is blurred in the foreground on the right. A large film strip is overlaid on the left side of the image, with frames showing various scenes, including a person's face and a group of people. The word 'REVIEW' is visible in the top frame of the film strip.

BURMAN FILM FESTIVAL



OPEN TO BURMAN & PAA STUDENTS!
FEBRUARY 2, 2025 AT 3PM, AD CHAPEL

DEADLINE TO REGISTER IS DECEMBER 3

Register [HERE](#)

Students from Alberta, Scholarships for you!

The **Dr. Gary McPherson Leadership Scholarship** recognizes students who have demonstrated outstanding leadership, especially in the area of disability.

Selection will be made on the basis of the role and contribution each student has made to the school as well as the documentation provided with the application.

- **VALUE:** \$2,000
- **Application Deadline:** January 15, 2025.

CRITERIA:

- A Canadian Citizen, Permanent Resident, or Protected Person
- An Alberta resident according to the criteria outlined on the application
- Must be in good academic standing.
- Must be a full-time student, enrolled in a minimum of 9 credits in the current semester.
- Must have shown outstanding leadership, especially in the area of disability, and/or initiative to improve the lives of other people while attending a publicly-funded post-secondary institution in Alberta.

HOW TO APPLY:

Fill out the **APPLICATION**, returning it to sfs@burmanu.ca with the following:

- a resumé highlighting your leadership involvement and extra-curricular activities related to improving the lives of other people, and
- an essay of up to a maximum of 1,000 words.

The **Laurence Decore Award** for Student Leadership recognizes post-secondary students who have demonstrated outstanding dedication and leadership to fellow students and to their community.

Selection will be made on the basis of involvement and accomplishments in student government or student societies, clubs or organizations, or student organizations at the provincial or national level, or in non-profit community organizations.

- Value: \$1,000
- Application Deadline: January 15, 2025.

CRITERIA:

- A Canadian Citizen, Permanent Resident, or Protected Person
- An Alberta resident according to the criteria outlined on the application
- Must be in good academic standing.
- Must be a full-time student, enrolled in a minimum of 9 credits in the current semester.
- be involved in either student government or student societies, clubs or organizations, or involved in student organizations at the provincial or national level or in non-profit community organizations.

HOW TO APPLY:

- Fill out the **APPLICATION**, returning it to sfs@burmanu.ca with the following:
- A detailed description of your involvement and accomplishments in student government or student societies, clubs or organizations, or student organizations at the provincial or national level or in non-profit community organizations.

SEW INN

ALL PROFESSIONAL SEWING SERVICES



We want to look our best everyday, and that almost always involves having clothes conform to our shape. Ready to wear clothes are designed for a balanced figure. Sew Inn provides alterations and customization of outfits to suit your body to perfection. A custom dress is unique because it is made specifically for you, based on your measurements and design choices. This ensures a perfect fit and allows you to express your personal style. From the fabric and color to the neckline and hemline, every detail is specific.



We are committed to helping you craft and recreate the perfect form fitting flattering outfits every time whatever the occasion.



**HOME OF EXTENSION &
BRAIDING EXPERTS
4716 49B AVE, UNIT 2,
LACOMBE
MERCHANTILE BUILDING
LACOMBE**

**Phone: (403) 913 4730
(587) 438 0997**

**Facebook: Sew Inn Expert
Instagram: sewinnexpert
TikTok: sewinnexpert**



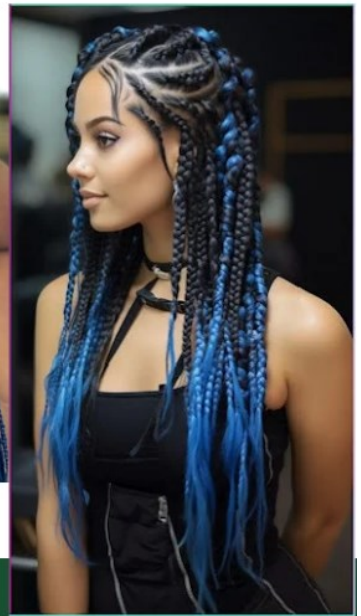
HOME OF EXTENSIONS AND BRAIDING EXPERTS



As dedicated partners in the beauty industry, we offer high-quality Remi human hair extensions, hairpieces, and accessories. We believe in the healing power of hair, the beauty of transformation. Do you have short hair, alopecia or are you experiencing hair loss due to chemotherapy, and you want a fuller crown, come to us and we will make you feel like a whole new woman, flawless.



Cornrows and Dreadlocks are chic ways to both protect and style your natural hair while Box braids, Twisted braids or Crochet braids are the ultimate get-up-and-go hairstyle. Whatever your preference, we can help you achieve your dream look with specialized techniques.



4716 49b Ave Lacombe, Mercantile Building Lacombe

Phone: (403) 8484392 (587) 438 0997

Facebook: Lacombe Home of Hair Extensions

Instagram: lacombehomeofextensions

Website: www.kepsbeautysupply

Email: extensionbraiding@gmail.com