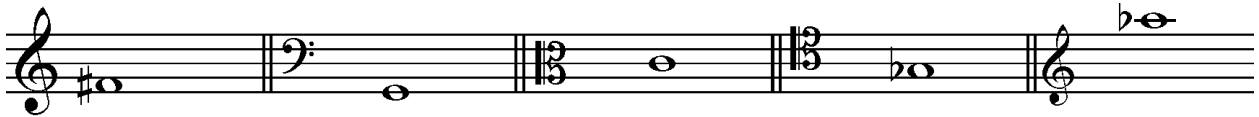


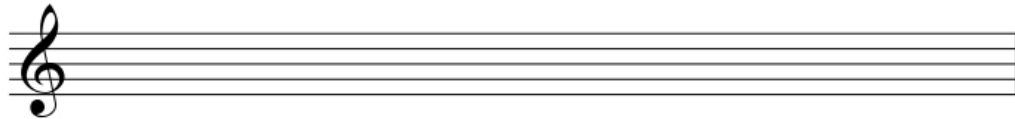
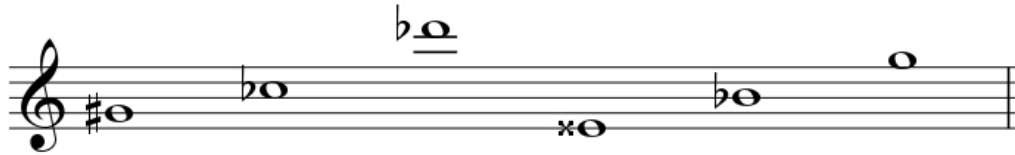
Name:

## Music Theory Evaluation

1. Name the following notes.



2. Write the enharmonic equivalent of the given notes on the staff below.

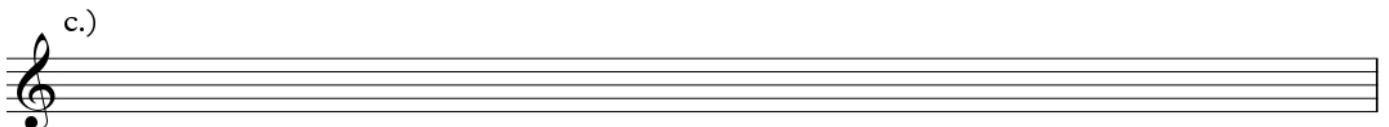
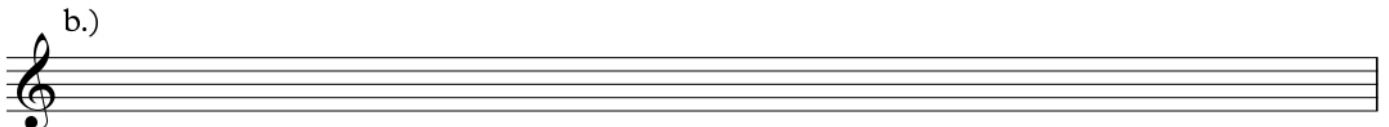
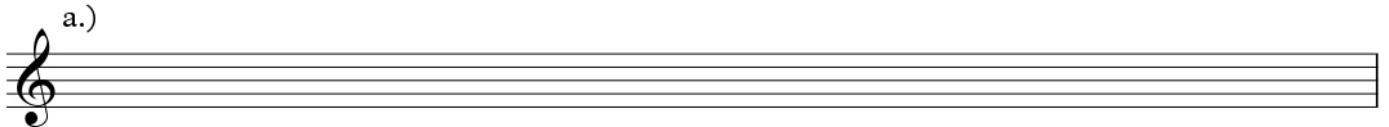


3. Using the given clefs, write in whole notes the following scales. Do not use key signatures but place the necessary sharps or flats before the notes themselves as required. Indicate with slur where semitones occur.

a.) D-flat major descending

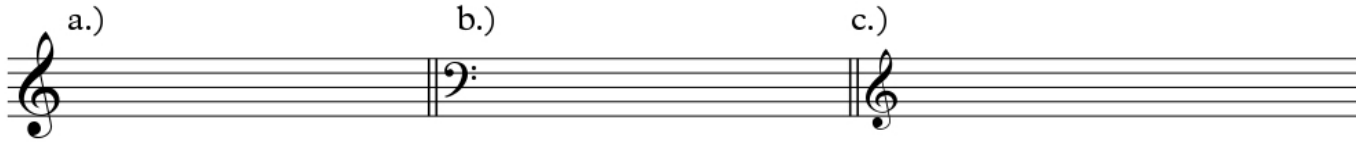
b.) F-sharp minor melodic, ascending and descending

c.) B major, ascending



4. Using the given clefs, write the key signatures for the following keys:

- a.) G-sharp minor
- b.) C-flat major
- c.) F minor



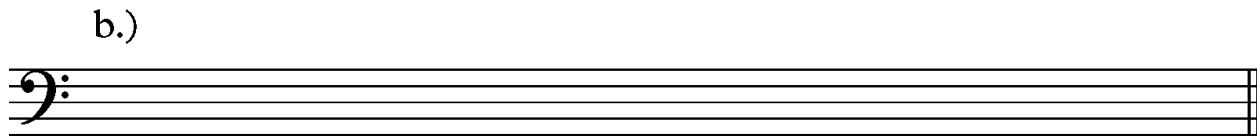
Three musical staves are shown, each with a different clef. The first staff has a treble clef and is labeled 'a.)'. The second staff has a bass clef and is labeled 'b.)'. The third staff has a treble clef and is labeled 'c.)'. Each staff is empty, intended for the student to write the key signature.

5. a) Name the following intervals (size and quality e.g. P5, m6).

b) On the staff below write the inversion of each interval and name it.




A musical staff with a bass clef containing five intervals, each marked with a brace and a label 'a.)'. The intervals are: 1) a major 2nd (C4 to D4), 2) a minor 3rd (C4 to E-flat4), 3) a perfect 4th (C4 to F4), 4) a major 6th (C4 to A4), and 5) a minor 7th (C4 to B-flat4).



An empty musical staff with a bass clef, labeled 'b.)', intended for the student to write the inversions of the intervals from the previous staff.

6. Write the required interval BELOW the given note.



A musical staff with a treble clef containing five notes, each with a label above it: 'Major 3rd', 'Minor 7th', 'Perfect 5th', 'Major 2nd', and 'Major 6th'. The notes are: B-flat4, C4, D4, E4, and F4. The staff is intended for the student to write the required interval below each note.

7. Complete the following bars with rests.



A musical staff with a treble clef containing four measures. The first measure has a 6/4 time signature and a dotted quarter note. The second measure has a 4/8 time signature and an eighth note. The third measure has a 4/4 time signature and a quarter note. The fourth measure has a 3/2 time signature and a half note. Each measure is followed by a bar line, indicating where to place rests.

8. Name the root, type and position of the following triads. The first one has been completed for you as an example.



root: F#      \_\_\_\_\_      \_\_\_\_\_      \_\_\_\_\_      \_\_\_\_\_      \_\_\_\_\_      \_\_\_\_\_

type: M      \_\_\_\_\_      \_\_\_\_\_      \_\_\_\_\_      \_\_\_\_\_      \_\_\_\_\_      \_\_\_\_\_

position: root      \_\_\_\_\_      \_\_\_\_\_      \_\_\_\_\_      \_\_\_\_\_      \_\_\_\_\_      \_\_\_\_\_

9. For each of the following:

- a) Write the key signature of the key indicated
- b) Write the triad indicated

F major IV                                  E major VI                                  B minor II

10. Rewrite the following excerpt on the staff below using a key signature instead of accidentals. Add a time signature.