



*Together We're
Building a
New Library*

Shaping the World 
Lives of Service Begin Here

BURMAN UNIVERSITY
STEPS INTO THE FUTURE

A Legacy of Shaping Lives

A Message from the President

For more than 110 years, Burman, the only Seventh-day Adventist university in Canada, has shaped the lives of thousands of students. Along the way, there have been challenges—a fire, debt, and decades-long quest for provincial accreditation. But the sacrifices and investments made by our predecessors have been invaluable: alumni, with their discernment, commitment, and compassion, are doing great things in Alberta, in Canada, and around the world.

Today we face new challenges and opportunities. We have a responsibility to students of the future who deserve the best learning environment, transformative education, and experiences that will motivate and enable them to serve others. To provide these, we began the SHAPING THE WORLD campaign in 2018.

Since that time, we have been committed to three goals: student success initiatives, focus on faculty and programs, and a reimagined library.

At this time, we are directing special attention to the library, working to begin the construction of a new building in the near future—a place that will provide students with enhanced opportunities to learn, connect, and belong. Donors have been committed, and we are well on our way towards making this vision a reality: as of January 2021, \$4 million of the \$6 million goal has been raised.

The \$6 million library campaign is much more than an opportunity to help construct a building. It's an investment in young people who have the capacity and motivation to shape the world.

Please join us as we step into the future with—and for—the students of Burman University.



Loren Agrey, PhD
President

This brochure includes three sections:

- *Background information about Burman University and how its students and alumni are committed to service.*
- *Plans for the new library and how it can serve students.*
- *Participation: shaping young lives when you make a gift to the library campaign.*

Experiencing the rewards of community service begins in the first year at Burman as student volunteers, faculty, and staff participate in Serve Lacombe Day.



At Burman University, we teach minds to think, hearts to care, and hands to serve.

Burman Overview

Our Mission

Burman University will educate students to think with discernment, to believe with insight and commitment, and to act with confidence, compassion, and competence.

Facts about Burman

- 410** Enrolment, Fall 2020, when COVID-19 affected enrolment. *Small classes make students feel connected to professors and fellow students.*
- 10:1** Student-to-professor ratio. *Small class sizes keep the attention personal and the quality high.*
- 41** Professors. *85 percent of our teaching faculty have earned PhDs.*
- 35** Majors. *From biology to music, from international studies to wellness management, students can pursue their passions and brighten their future.*
- 40** Approximate number of countries represented. *We rejoice in our diverse student population.*
- 327+** Choir members attended the 40th Anniversary Choir Reunion, April, 2018. *The basses generated so much power that the risers shook!*
- 1075+** Students involved in Acronaires during its 47-year history. *There have been too many handstands to count.*

Photos in this brochure were taken prior to COVID-19. Burman University supports and follows all provincial guidelines for university health and safety.



Burman students smile as they anticipate a new academic year.



Leduc, 1907



North Hall, Lacombe, 1909



Assembly Hall, 1920

The Shape of Things to Come

The University's founders, Charles and Leona Burman, lived lives of faith and service—and had a vision of shaping the lives of young people in Alberta. These students would, in turn, shape the world.

In 1907, to offer a practical Christian education, the Burmans rented a building in Leduc, planned a curriculum, and headed up the faculty. When an academic institution was planned, the shape of their lives—and of the school itself—changed.

In 1909, when the school moved to Lacombe, most of the activities took place under the gambrel roof of North Hall, a renovated barn. Some women were housed in a small laundry building; others slept in tents that first winter. Later the Assembly Hall pointed its spire to the sky.

Today, the institution that bears the name of Charles and Leona Burman has a different appearance, but, like the Burmans, it continues to shape the lives of young people and to prepare them for a wide range of careers, with an ever-present emphasis on service values.

Charles and Leona Burman entrusted us with an inspiring heritage. Burman University is committed to inspiring its students to service and excellence.



The "Hilltop." Located in picturesque Lacombe, Alberta—a city that MoneySense.ca says is among the five best places to live in Canada—Burman University is committed to inspiring its students to lives to excellence and service.

Burman is Serving...

The Community

- 162** Participants in Serve Lacombe Day 2019. *We serve.*
- 90** Percent of faculty and staff involved in service annually. *We model service.*
- 172** Graduates teaching in SDA primary and secondary schools in Canada. *That's 47 percent of the work force.*
- 1000+** Burman alumni volunteering with food banks, literacy initiatives, women's shelters, home and school associations. *And the list goes on—as does the light that shines from their lives.*

The Church

- 114** Graduates working as SDA pastors in Canada.
- 39** Alumni serving in Church administration or as support staff in Canada.

The World

- 419+** Alumni who worked as full-time missionaries. *They have served in more than 109 countries, including Bangladesh, Botswana, Lebanon, Laos, Fiji, and France.*
- 312** Student missionaries. *They have served in 69 countries—from Australia to Venezuela and places between. The list is a long one but their influence continues even longer.*



◀ Peter Rick (attended 1907-11) was the first member of the Hilltop student community to walk the path of international service. In 1911, Peter sailed for India to work as a literature evangelist. Later, he served in Australia.



Jonathon Thorp (BSc Biology, 2007) is one of the many Burman alumni who are currently serving internationally. An attending physician in internal medicine and the Chief Operating Officer at Scheer Memorial Adventist Hospital, Nepal, Jonathon states that Burman provided him with an environment to hone his character and help him develop into a professional.

Alumni from the Hilltop have served as full-time workers in 109+ countries.



Alumni find satisfaction and meaning as they help shape the world.

Learning, Connecting, and Belonging

A Message from the Librarian

A library is much more than a collection of books. It's a key gathering space—a place where people can learn, connect, and belong.

The existing library was originally built in 1950 to serve as a cafeteria and a college store. In 1964 the building was re-purposed for a library. But yesterday's facilities won't adequately serve students for the future. For this reason, together with your help, we're building a new library.

The modern facility will feature new quiet places for study and reflection and will provide collaborative learning spaces and meeting rooms.

Learning. Students will, of course, have access to books and popular articles, but learning opportunities don't stop there. The majority of Burman's acquisition budget is earmarked for specialized digital resources. In addition, virtual learning tools will enhance knowledge. The Burman library will foster exploration, nurture research, and prepare students for success in a society that values information.

Connecting. Scholarly activities, scientific discovery, and responsible research are enhanced by a network of educational opportunities and support. Besides collaborating for research, students will be able to create multi-media projects from resources shared by several departments. A "makerspace" will allow students from all disciplines to creatively apply their knowledge.

Belonging. Group study rooms and the Fireside Connection will accommodate students who favour different styles of learning and social interaction. The library will also provide meeting places for clubs and committees, perhaps even for lectures and community events.

Learning, connecting, and belonging – they're all at the heart of the Burman University library.



Sheila Clark, MLIS
Librarian

Knowledge is increasing exponentially—IBM estimates that it doubles every 11 or 12 hours. Individuals and groups can self-publish material, creating a vast repository of facts and ideas. One example is the Digital Commons Network which brings together free, full-text scholarly articles. It is used by over 500 institutions to share their scholarly output and special collections.

Artist's view of the new library, from the east. ►



For a video tour of the new library, use the link below:
www.burmanu.ca/new-library-virtual-tour

The New Library: An Overview

The new library will feature...

- 18,032 square feet.

On the upper floor, you'll find...

- 4 study alcoves, with individual windows, that foster concentration and reflection.
- Fireside Connection that nurtures conversation and growth.
- Information commons that facilitates research and discovery.
- High-density shelving that reduces the overall storage footprint—it's only 19% of the floor space. This provides the convenience of on-site access to print materials and allows for increased space for other activities.
- Centre for Peace and Justice, whose programs promote inclusive and harmonious communities.

Connecting the main and lower floors is a staircase featuring a beamed ceiling and open spaces. You can also use the elevator.

On the lower floor, you'll discover...

- 5 group study rooms that provide space for collaboration.
- Makerspace, a collaborative work space, designed to promote critical thinking and hands-on creativity.
- Classroom with cutting edge technology for sound and video.
- Special collections room where students can hold heritage in their hands.
- The Writing Centre where students can learn to become confident and informed writers.

Throughout the library...

- You'll sense the care and commitment of Burman University and its donors.



The Heart of the Campus

Avibrant library is a centre where learning, scholarship, and technology meet. It's a place where students learn to find, evaluate, and use real world information, where they discuss ideas, and plan for the future.

In our digital age, university libraries have become learner-centered places rather than book-centered spaces. It is here that librarians mentor learners as they seek knowledge, training them to evaluate information and sources critically and to incorporate selected information into their knowledge bases and value systems. It is here that scholarly activity begins. And it is here—in the library—where discovery blossoms in a network of support and opportunities.

At Burman University, the library will be the heart of the campus.



Learn

In one sense, libraries are not a *place*. They are the transportation ... to knowledge, to wonder, and to growth.



Connect

Libraries are communication hubs that connect individual learners with each other and with the shared knowledge and wisdom of many voices.



Belong

Libraries help us see possibilities more clearly. They inspire us to search, to find purpose and belonging.

Our Deep Responsibility

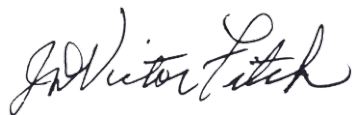
I stand firmly beside Burman University...and it's a good place to plant my feet. I'm honoured to spread the good news of the exciting possibilities that are present on the Hilltop, to encourage all of us to foster learning, belief, and action.

I know that Burman University is a catalyst for greater faith and service. My roots are on the Hilltop. I was a student there, gave my life to the Lord, prepared for my life of service, and met my wife, Gem.

I've also spent more than half my professional life on campus. As a dean, I sought to guide dorm residents to make the right decisions. Oh, we rough-housed and laughed, but we also prayed and worked. As a professor, I saw my students learn to balance equations and to balance their lives. I was president when the institution was given degree-granting status and was thankful for the perseverance of leaders who had brought us to this milestone.

Each of us is called to the deep responsibility of helping students shape their futures, of encouraging them to become the people they were created and called to be. With a new library, students will find enhanced opportunities to learn, connect, and belong. They will build on this foundation as they study for the gospel ministry, as they become caring and committed teachers, farmers, physicians, writers, trades people, accountants, and social workers—people who will use their heads, hearts, and hands for service.

I personally urge you to join me to invest in the students of Burman University—and to invest generously.



J.D. Victor Fitch
President Emeritus
Chair, Campaign Advisory Team

*Victor Fitch (right) visits
with prospective donors.*



Our Donors Model Commitment and Service

By their gifts, donors have shaped the campus of Burman University and the lives of the students who study here.

Because of leadership gifts from alumni and friends in the past, students conduct experiments in the Chan Shun Science Centre and find academic and emotional support at the Sakala Success Centre.

Today, a number of alumni and friends, committed to shaping lives at Burman University, have made major donations to the new library. A leadership matching gift of \$1 million from Elvin Saruk and Grace Fedak created THE ABUNDANT HARVEST challenge which ensures that in 2021, all donations up to \$1 million will be doubled.

There have also been significant gifts from the Halminen family, Gail Misek, the estate of Carol Clark, the Seventh-day Adventist Church in Canada, and many others.

The initiative of Murray and Elaine Sankey, who helped raise \$200,000 in matching funds to honour a Burman mentor, may inspire you to think of people who gave you the skills you needed for success ... those who nourished your soul and encouraged you to serve.

As the new library takes shape, we invite you to make a gift that celebrates a person who helped shape you—and helped shape the world. Your donation will continue your mentor's legacy and foster the ideals of excellence and service in the lives of Burman students.

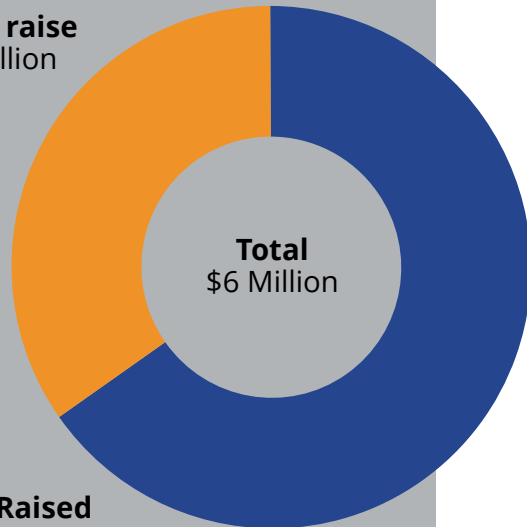
Thanks to the generosity of our donors, groundbreaking is planned for spring, 2021.



Artist's view of the new library, from the northeast

As Burman University steps into the future with a new library, please consider your role in shaping young lives.

Still to raise
\$2 Million



Raised
Cash and pledges
\$4 Million

\$4.7 million: Building costs

\$1.3 million: Furniture, landscaping, paving, contingencies, marketing, and management

How You Can Participate...

We invite you to donate to the new library. While doing so, you may wish to honour a family member, a member of the Burman community, or someone else who shaped your world.

Photos and life sketches of honourees, along with the names of contributors, will be displayed in the library. There are also many opportunities to name specific areas of the library.

Ways to Donate

Gifts of cash: You can make a one-time gift, an annual, multi-year pledge, or a monthly contribution. Ask for information about doubling your contribution in THE ABUNDANT HARVEST challenge.

Gifts of stock and securities: Donating publicly traded securities is an easy and effective way to support Burman. You may donate stocks, bonds, futures, options, and shares in mutual funds without paying tax on the capital gain.

Gifts-in-Kind: You may wish to give a gift-in-kind, for example building materials or salable assets such as property. Every item will be reviewed individually.

Please consider your participation thoughtfully and prayerfully.

Loren Agrey
President

president@burmanu.ca
(403) 782-3381, ext. 4147

J.D. Victor Fitch
*President Emeritus; Chair,
Campaign Advisory Team*

jdvfitch@gmail.com
(403) 302-0231

Eric Rajah
*Chair, Advancement and
Donor Relations*

erajah@burmanu.ca
(403) 782-4938

Major giving opportunities can be found on pages 16-23 of this brochure.

Major Giving Opportunities

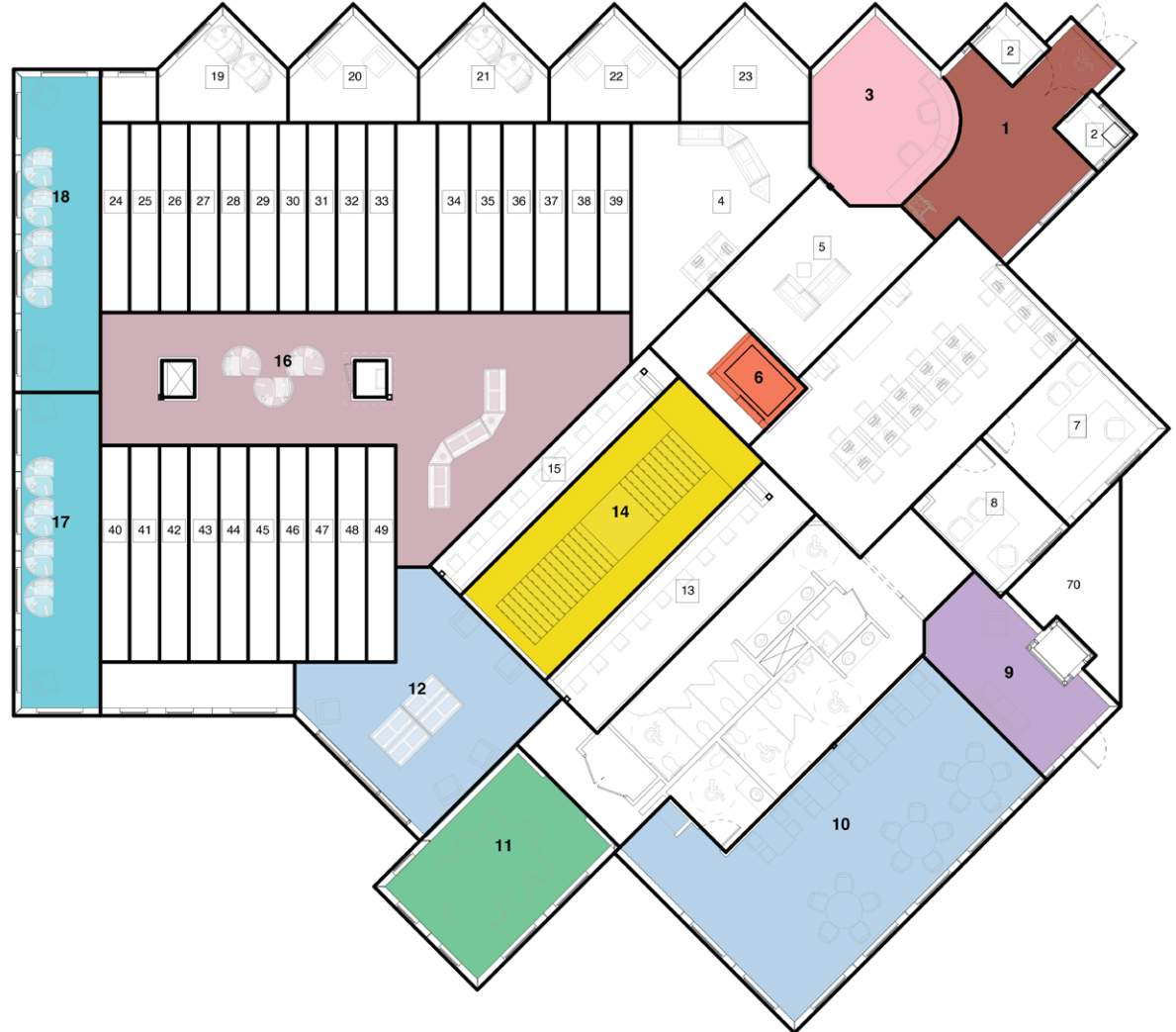
*\$50,000+ Gift**

Upper Floor

Space Designation Key

- 1 Entrance
- 3 Circulation Desk
- 6 Elevator
- 9 Fireside Connection
- 10 Upper Study Commons
- 11 Centre for Peace and Justice
- 12 Upper Study Commons
- 14 Staircase
- 16 Research Corridor
- 17 Upper Individual Study Areas (2 available)

*Donors of \$50,000+ may name an area of the Library

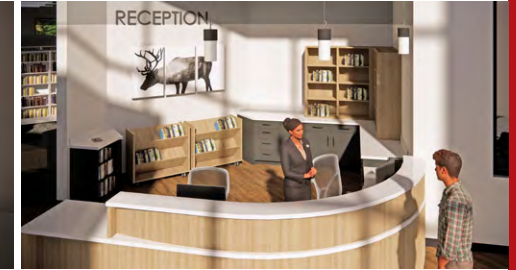


Supporting students through your gift...

Upper Floor \$50,000+ Gift



1. Entrance
\$60,000



3. Circulation Desk
\$60,000



6. Elevator
\$100,000



9. Fireside Connection
\$125,000



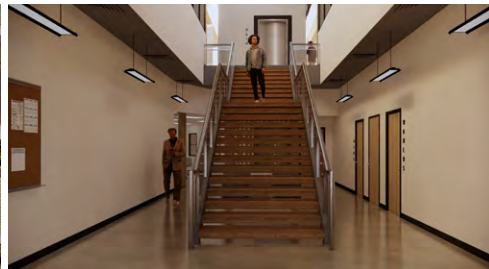
10. Upper Study Commons
\$225,000



11. Centre for Peace and Justice
\$60,000



12. Upper Study Commons
\$75,000



14. Staircase
\$100,000



16. Research Corridor
\$200,000



17. Upper Individual Study Areas
\$150,000 each (2 available)

Major Giving Opportunities

*\$50,000+ Gift**

Lower Floor ...and Outside

Space Designation Key

- 50** Office: Library Technician
- 53** Makerspace
- 54** Classroom
- 60** Special Collections
- 62** Lower Study Commons, East
- 63** Lower Study Commons, West
- Performance Stage
- Amphitheatre
- 70** Community Plaza**

*Donors of \$50,000+ may name an area of the Library

**You can see this space on page 16



Supporting students through your gift...

Lower Floor \$50,000+ Gift



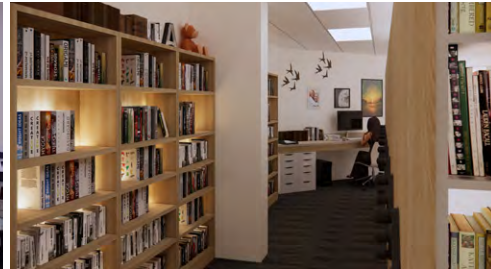
50. Office: Library Technician
\$60,000



53. Maker Space
\$125,000



54. Classroom
\$110,000



60. Special Collections
\$50,000



62. Lower Study Commons, East
\$100,000



63. Lower Study Commons, West
\$100,000

Outside Area: See page 16



Performance Stage*
\$50,000



Amphitheatre*
\$65,000



70. Community Plaza*
\$60,000

**Areas may not be exactly as shown*

Major Giving Opportunities

*\$25,000 to \$50,000 Gift**

Upper Floor

Space Designation Key

- 2 Display Area
- 4 Information Station
- 5 Periodical Reading Area
- 7 Office: Librarian
- 8 Office: Assistant Librarian
- 13 Study Corridor West
- 15 Study Corridor East
- 19 Study Alcoves (4 available)
- 23 Children's Book Centre
- 24 Book Stacks (26 available)



*Gifts may be acknowledged on a plaque or on the Wall of Gratitude

Supporting students through your gift...

Upper Floor

\$25,000 to \$50,000



2. Display Area
\$45,000



4. Information Station
\$45,000



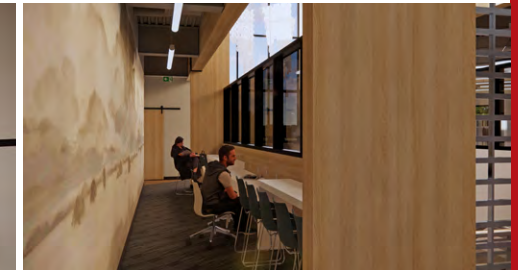
5. Periodical Reading Area
\$50,000



7. Office: Librarian
\$25,000



8. Office: Assistant Librarian
\$25,000



13. Study Corridor, West
\$25,000



15. Study Corridor, East
\$25,000



19. Study Alcoves
\$25,000 each (4 available)



23. Children's Book Centre
\$50,000



24. Book Stacks
\$25,000 each (26 available)

Major Giving Opportunities

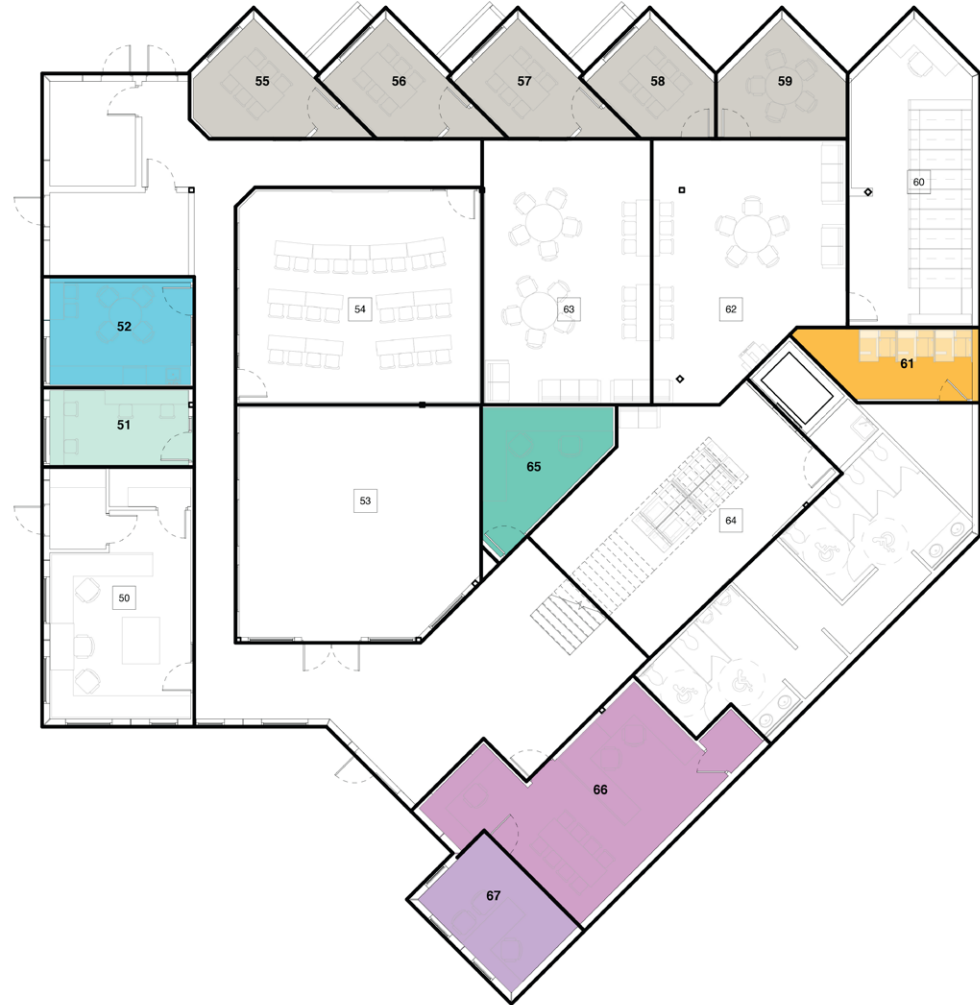
*\$25,000 to \$50,000 Gift**

Lower Floor

Space Designation Key

- 51 Writing Centre
- 52 Staff Meeting Room
- 55 Group Study Rooms (5 available)
- 61 Lower Individual Study Area
- 65 IT Services
- 66 Office: IT Services
- 67 Office: IT Director

*Gifts may be acknowledged on a plaque or on the Wall of Gratitude



Supporting students through your gift...

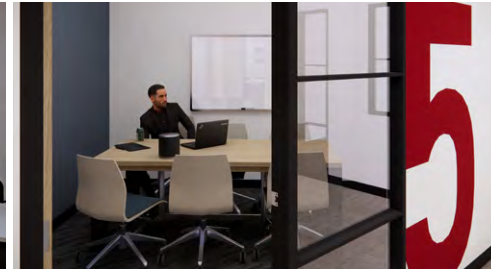
Lower Floor \$25,000 to \$50,000



51. Writing Centre
\$25,000



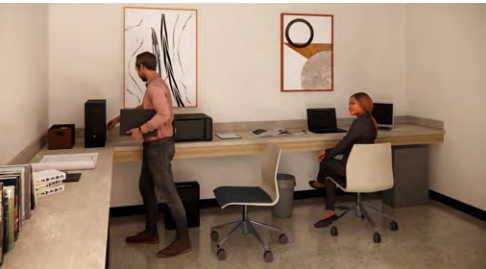
52. Staff Meeting Room
\$30,000



55. Group Study Rooms
\$25,000 each (5 available)



61. Lower Individual Study Area
\$25,000



65. IT Services
\$25,000



66. Office: IT Services
\$30,000



67. Office: IT Director
\$40,000



6730 University Drive
Lacombe, AB T4L 2E5

www.burmanu.ca